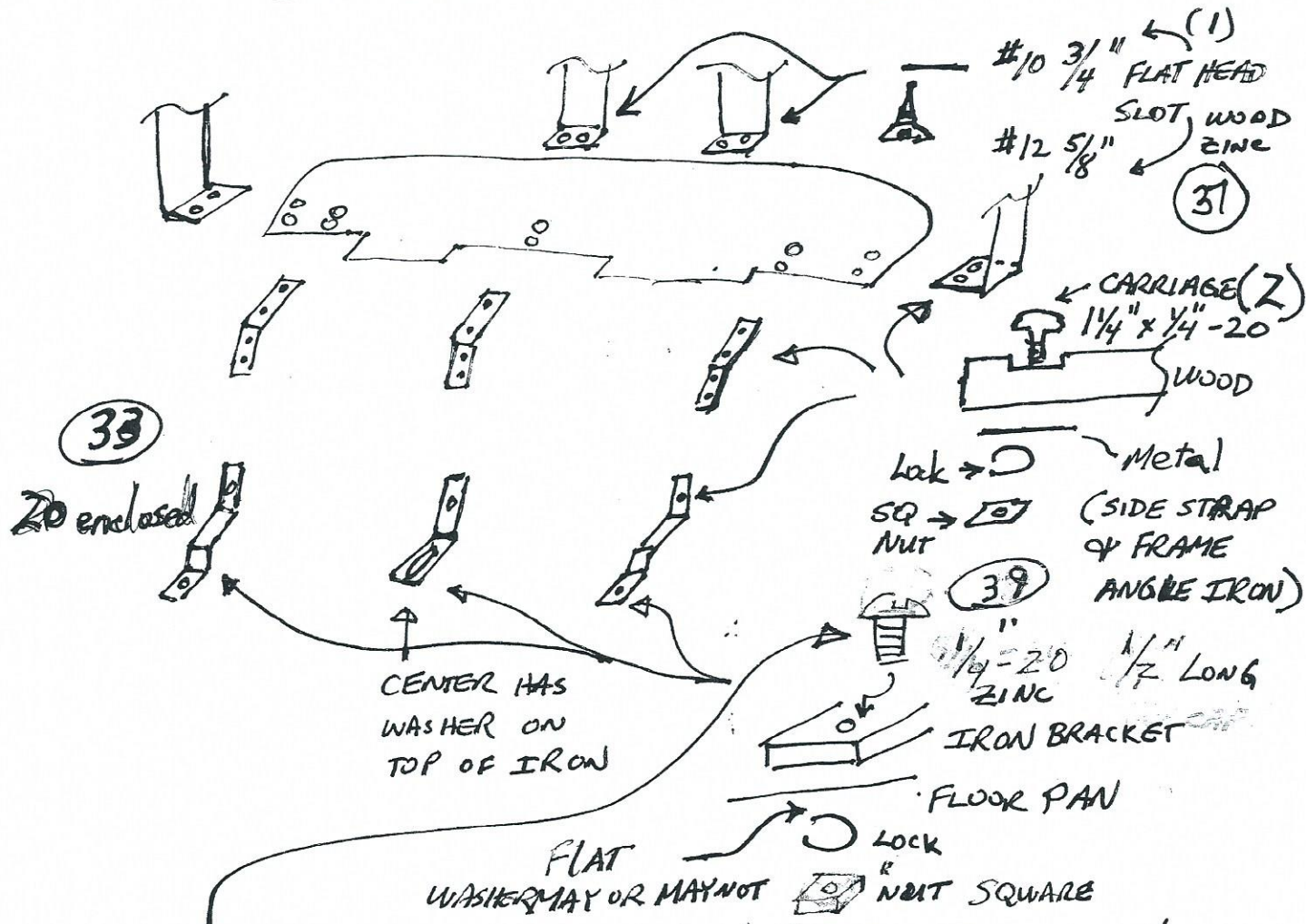


PACKAGE TRAY & FRONT SEAT FRAME



NOTE: I had some reports that HEX NUT WAS USED. Bill Monzo says it is 1/4-20 ROUND HEAD SLOTTED WITH LOCK WASHER & SQUARE NUT. SO I ENCLOSED BOTH HEX NUT & ROUND HEAD. See typed pages.

- (1) COULD NOT GET A #10 5/8" WHICH WOULD FIT THE BEST. SO BOTH SUPPLIED... CUT DOWN #10 TO 5/8" OR USE #12 5/8" IF IT FITS YOUR COUNTERSUNKS BETTER.
- (2) Roy at Fordbolts sells two kits R96-08 FOR PACKAGE TRAY TO STRAPS & R96-09 FOR IRONS TO SEAT FRAME. ALL INFO I HAVE IS THESE SHOULD BE CARRIAGE BOLTS BUT THE TWO KITS FROM ROY ARE TRUSS HEAD WITH SCREW DRIVER SLOT. I SUPPLIED THE CARRIAGE... IF YOU WANT THE TRUSS CONTACT ROY.